

## Volunteer Staff at Larch Hill

### Meitheal Staff

The volunteer staff in Larch Hill is known as the *Meitheal* Staff. *Meitheal* is an ancient Gaelic word meaning service to others.

### Who Can Join Meitheal Staff

Registered members of the scout or guide association who are at least 16 years of age can apply to join staff. Parental and Group consent is required. There are currently 35 members of the Meitheal including trainees. They range in age from 16 to 81.

### How do we Recruit

Scout and Guide groups are invited to send people to the campsite to assist on work or catering weekends. These type of weekend's help us to get to know the young people and they to know us.

### Staff Training

The purpose of training is to develop the individual and their interpersonal skills. To ensure continuity of care for campers.

### Why join the *Meitheal*

- ▮ Self Development
- ▮ Development of interpersonal skills
- ▮ Development of Scouting Skills
- ▮ Interaction with other scout groups from at home and abroad
- ▮ To work with fellow staff members from other groups.
- ▮ To be part of a winning Team
- ▮ Gain Qualifications; Rock Climbing, Archery, First Aid, etc.

### Staff Training

The purpose of training is to develop the individual and their interpersonal skills. To ensure continuity of care for campers.

### Method of Training

Formal and Informal. New trainees sign up for weekends for the first year. During this year they must complete a task book. It is the responsibility of the trainee to gain as much experience and knowledge from the full members of staff they work with on their weekends

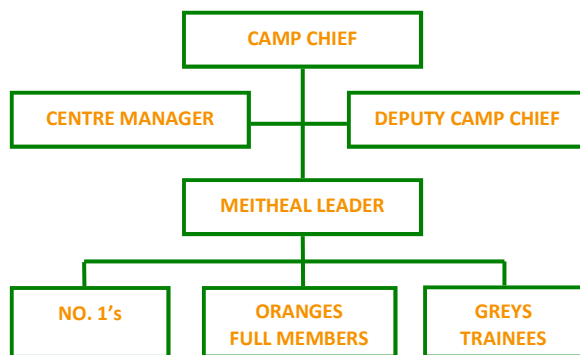
It is the responsibility of the No.1 on each weekend to assist trainees to get as much experience and knowledge as possible.

During their first 2 months as trainees they participate in a formal training weekend.

This is a structured weekend consisting of prepared talks, and utilizing role-play.

Senior members of staff who impart their knowledge and experience conduct the weekend.

### Overview of Campsite Management Structure



March 2008



# Larch Hill



## Meitheal Camp Staff Application Form

